

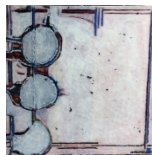
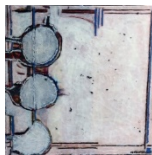
# PRESS, PRINT AND MONO-PRINT WORKSHOP

with Golden Certified Working Artist

**Kevin D. Tobin**

Saturday, August 12, 2017 - 10:00 AM to 5:00 PM

Sunday, August 13, 2017 - 10:00 AM to 3:00 PM



Presented by **Society of Mixed Media Artists (SoMMA)**  
To be held at the: **Jacksonville Gem and Mineral Society**  
3733 Crown Point Road, Jacksonville, FL 32257

**Space is limited to 18 students. FEE: SoMMA Members \$125 Non-Members: \$150**

For more information contact: Francesca at [ATatteredMuse@gmail.com](mailto:ATatteredMuse@gmail.com) or Tel: 904-273-0448

In this newest Golden workshop artists will learn a variety of processes to produce gorgeous backgrounds, mono-prints and one-off works of art. We will utilize OPEN Acrylics, QoR Watercolors, Gelli Arts Printing Plates and Plexiglass Printing Plates, along with artist participant designed collographic printing plates utilizing various gels and mediums. Prints will be 'pulled' on a selection of papers including Arches 88 - 140 lb watercolor paper. This is a two-day workshop as we need an overnight period to allow our printing plates sufficient time to dry.

**Necessary paints will be supplied.** Attendees should bring the following: a couple of small paint brushes, a palette knife, paper towels, container for water and a brayer if you have one. Also, if you have pre-made stencils please bring them as they will give you more printing options, and, a few old magazines to cut imagery from along with a pair of scissors. If you have a 5"x5" or 6"x6" Gelli Printing Plate please bring it along but not to worry, there are some available for your use. If you are a prolific artist or feel you will indulge in a printing frenzy... then please bring an additional selection of your own papers to supplement what Kevin will provide.

Included In The Fee Are Door Prizes And Free Product Giveaways.

.....  
Please detach and mail along with your check

**Press, Print and Mono-Print Workshop with Kevin Tobin**

Saturday, August 12, 2017 - 10:00 AM to 5:00 PM

Sunday, August 13, 2017 - 10:00 AM to 3:00 PM

For enrollment: **Please send check, made out to SoMMA and mail to:**  
**SoMMA Treasurer, 3026 Marsh Elder Dr., S. Jax, 32226**

SoMMA member: \$125\_\_\_\_\_

Non-Member: \$150\_\_\_\_\_

New Membership: \$40\_\_\_\_\_

Visit: [www.SommArtist.com](http://www.SommArtist.com)

Visit: [www.kdtobinart.com](http://www.kdtobinart.com)

Name: \_\_\_\_\_

Address: \_\_\_\_\_ City \_\_\_\_\_

St \_\_\_\_\_ Zip \_\_\_\_\_

E-Mail: \_\_\_\_\_

Tel: \_\_\_\_\_